

Photodiode chip FD016-01

Description

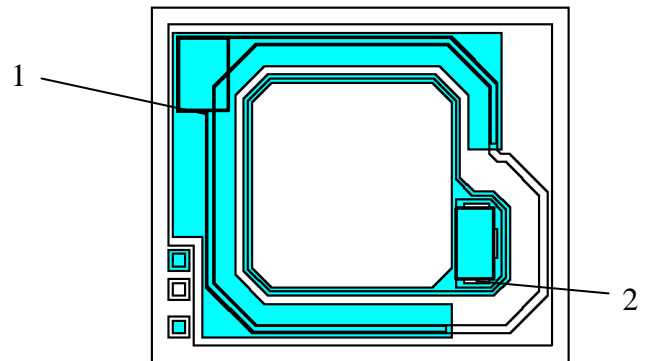
FD016-01 chip is designed to be used in optocouplers, hybrid microcircuits and packaged photodiodes.

Features

- Chip Size – 1.0 x 0.85 mm
- Chip Thickness – 0.32 mm±0.02mm
- Contact pads size:
Cathode – 0.120 x 0.174 mm;
Anode – 0.090 x 0.170 mm
- Metallization: top – AlSi;
bottom (Collector) - Si

Absolute maximum ratings

Operating Junction Temperature	-60 °C to 85 °C
Limiting Temperature	-60°C to 85 °C



1- Cathode
2- Anode

Electrical characteristics (T=25°C)

Parameter	Symbol	Unit	Min.	Typ.	Max.	Conditions
Dark current	I_D	nA	-	-	100	$V_{REV} = 30 \text{ V}$
Forward voltage	V_F	V	-	-	2.0	$I_{F(ON)} = 1 \text{ mA}$
Responsivity	S_L	$\mu\text{A}/\mu\text{W}$	0.1	-	-	$V_{REV} = 16 \text{ V}$ $\lambda = 0.82 \text{ mm} \pm 0.9 \mu\text{m}$ Note 1

Note 1 – Guaranteed by the chip design